

# COMPREHENSIVE CAMPUS SAFETY



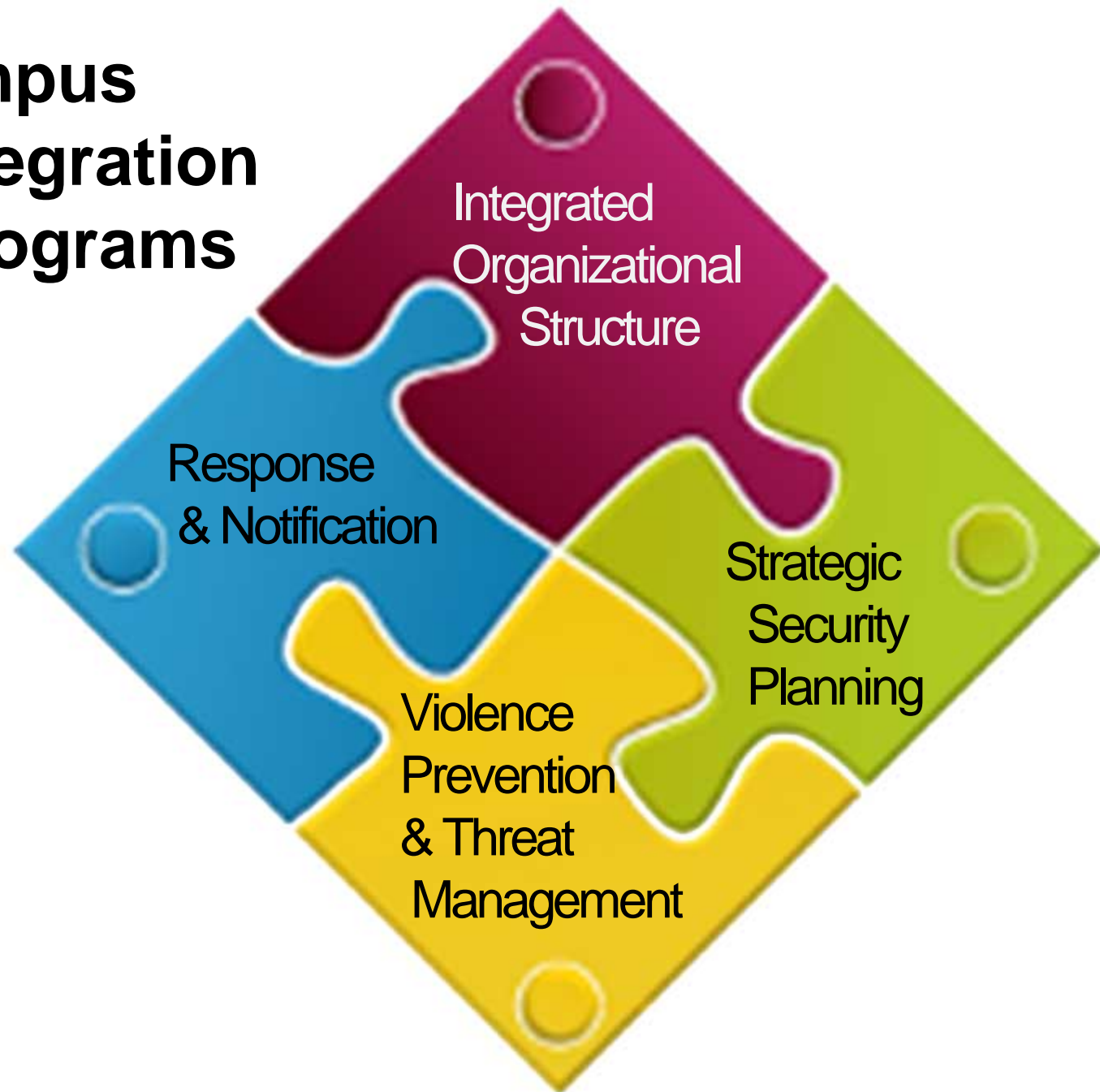
Faculty Senate  
January 22, 2019

David Rainer  
Associate Vice Chancellor  
Environmental Health & Public Safety  
[darainer@ncsu.edu](mailto:darainer@ncsu.edu)

Dr. Jack Moorman  
Chief of Police  
University Police Department  
[jwmoorma@ncsu.edu](mailto:jwmoorma@ncsu.edu)



# A Safer Campus Through Integration of Safety Programs



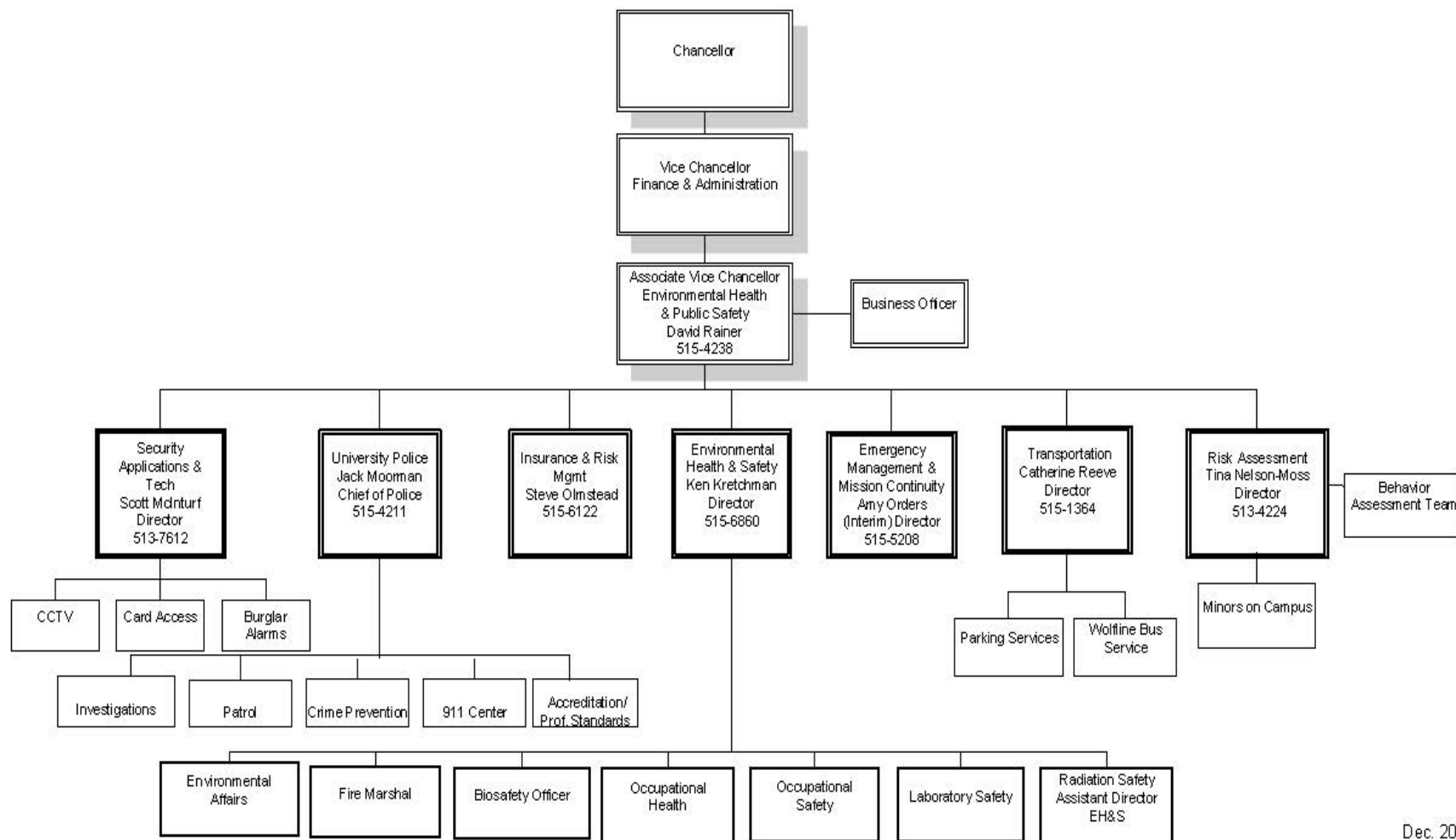


# CAMPUS DEMOGRAPHICS

## What Makes Managing Campus Safety Interesting

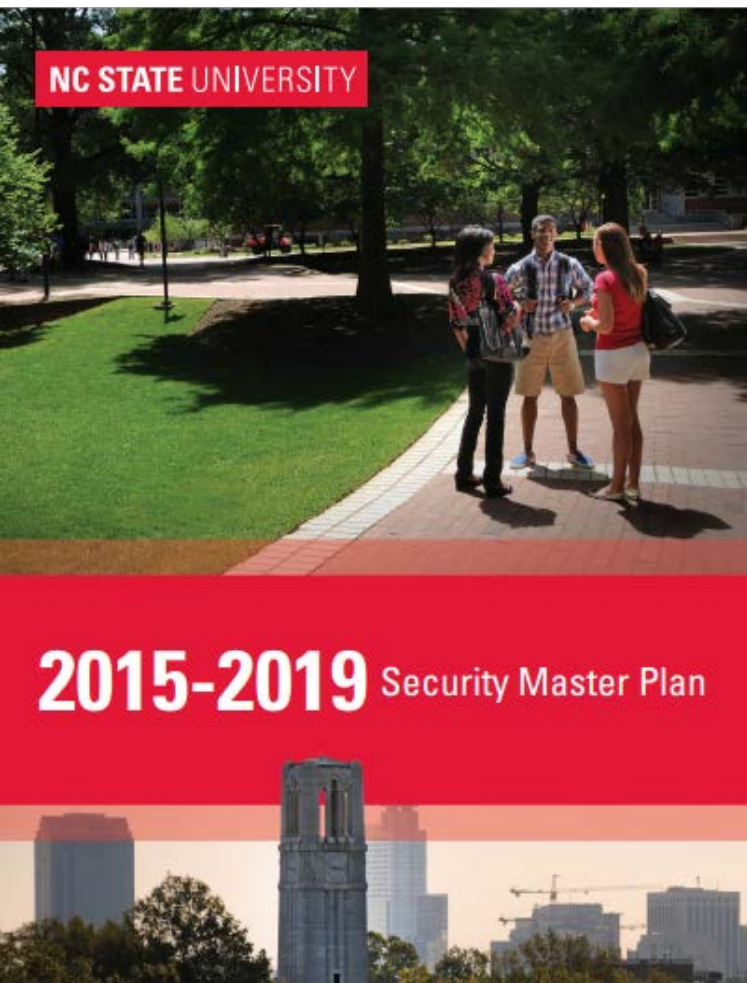
- 10,000 Students live in University controlled housing
- 57,000 People attend football games
- 1,500 Chemical laboratories, biological and radiological materials
- ~ 1,500 Safety Plans for places/spaces where we have hazardous materials and processes
- 20,000+/- Doors associated with ~ 17,000,000 sq. ft. under roof
- 55,000 Calls for service YTD Campus Police 911 Center / 10,000 requiring Officer dispatch
- The expectations of parents that their students are “always safe.”

# NC STATE UNIVERSITY ENVIRONMENTAL HEALTH AND PUBLIC SAFETY ORGANIZATION CHART





# STRATEGIC SECURITY PLANNING: Security Master Plan



**Goal 1:** Centrally Manage Security Risk

**Goal 2:** Enhance Security Awareness through Community Engagement and Education

**Goal 3:** Integrate Security into Planning, Design, Construction, and Facilities Operations

**Goal 4:** Implement Measures to Protect Higher-Risk Areas and Building Perimeters

**Goal 5:** Enhance Security of Campus Perimeter and Outdoor Spaces



# ENVIRONMENTAL HEALTH & SAFETY

(Radiation Safety, Biosafety, Chemical Safety, Fire Protection, Environmental Management)



- **People** - Identify them, Orient them, Train them, Protect them (New Employee Safety Orientation Checklist, Training Matrix, 91 unique EHS courses offered)
- **Partnerships** - Safety partnerships with Facilities, Academic Departments and Committees
- **Processes** - Hazard Assessments, Self Assessments, EHS Inspections, Review of new building designs, incoming hazardous materials, equipment and processes, Sharing of best practices.
- **Protection** - Use of appropriate PPE, 1047 fume hoods, 47 labs with high power lasers and controls



# UNIVERSITY POLICE



- 56 sworn law enforcement officers, all completing:
  - Basic Law Enforcement Training
  - Crisis Intervention Team (CIT) Training
  - Active Shooter Intervention (ASI)
    - Communications center personnel know how to manage information during shooter emergency (WolfAlert siren)
- CALEA / IACLEA Accreditation
- University Police 911 Center staffed 24/7
- Extra-territorial jurisdiction agreement with City of Raleigh
- Communications interoperability with all local law enforcement, fire and EMS





# VIOLENCE PREVENTION & THREAT MANAGEMENT



## **Behavioral Assessment Team (BAT)**

- Evaluates persons who represent threat to campus community
- Representatives from Police, Office of General Counsel, Faculty, Housing and Residence Life, Student Conduct, Human Resources
- Annually average 35 employee cases; 47 non-affiliated cases; 96 student cases

## **Division of Academic and Student Affairs (DASA) – CARES Team**

- Supports students in crisis
- Representatives from academic departments and some administrative staff

## **Minors on Campus**

- Estimated 15,000 plus
- Track and register programs
- Training and background checks





# EMERGENCY MANAGEMENT & CONTINUITY



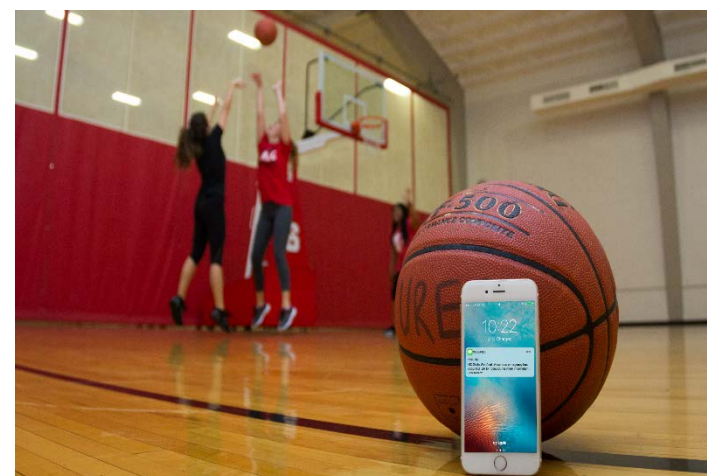
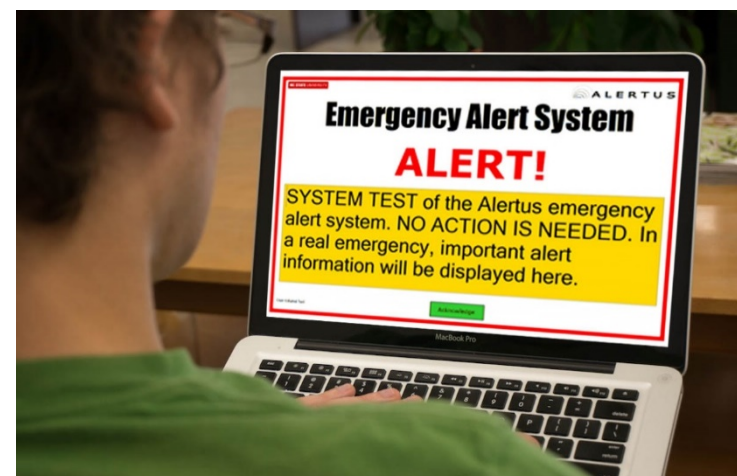
- Written emergency plans for ~ 140 critical units, service centers, academic departments.
- Emergency plans address preparedness, response, recovery and mission continuity.
- Tabletop and Functional Drills, with campus constituents including Executive Officers
  - Active Shooter
  - Weather Disasters
  - Chemical Releases
  - FBI – Crime scene control/investigation
  - Cybersecurity





# WOLF ALERT MESSAGING

- University Siren System
- Computer Emergency Alert System - ALERTUS
- Email Notification
- Text Messaging
- Social Media
- Billboards >300 Electronic displays across campus
- University Homepage



# A Safer Campus Through Integration of Safety Programs

