

PACK Ready during COVID-19

Dr. Amy Orders
Emergency Management and
Mission Continuity

Emergency Planning

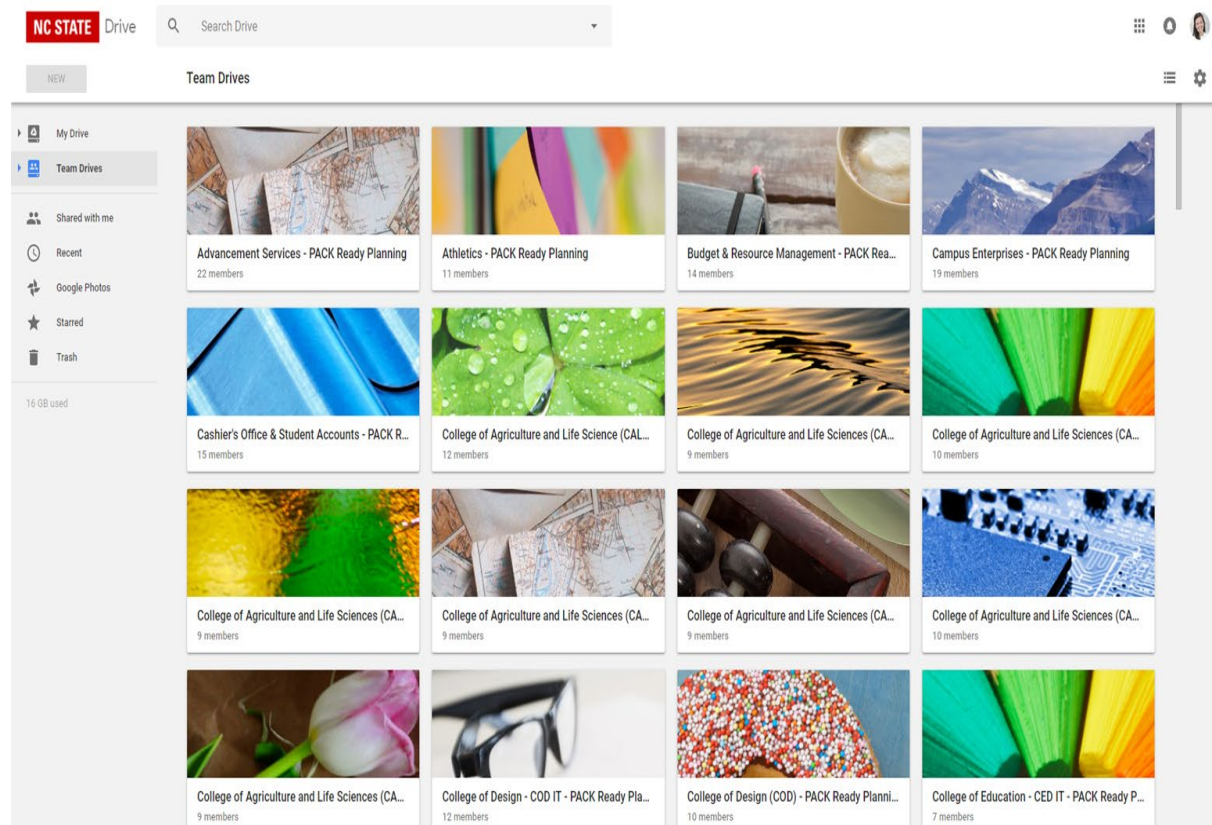
- ***PACK Ready*** collaborative planning paradigm of holistic emergency preparedness, response and recovery, including continuity.
- ~165 individual plans of critical units, service centers and academic departments



Pack Plans

Plans are housed in Google Share drives, with identified planning individuals in each department/college.

These plans are a collaborative effort and support from department representatives is essential.



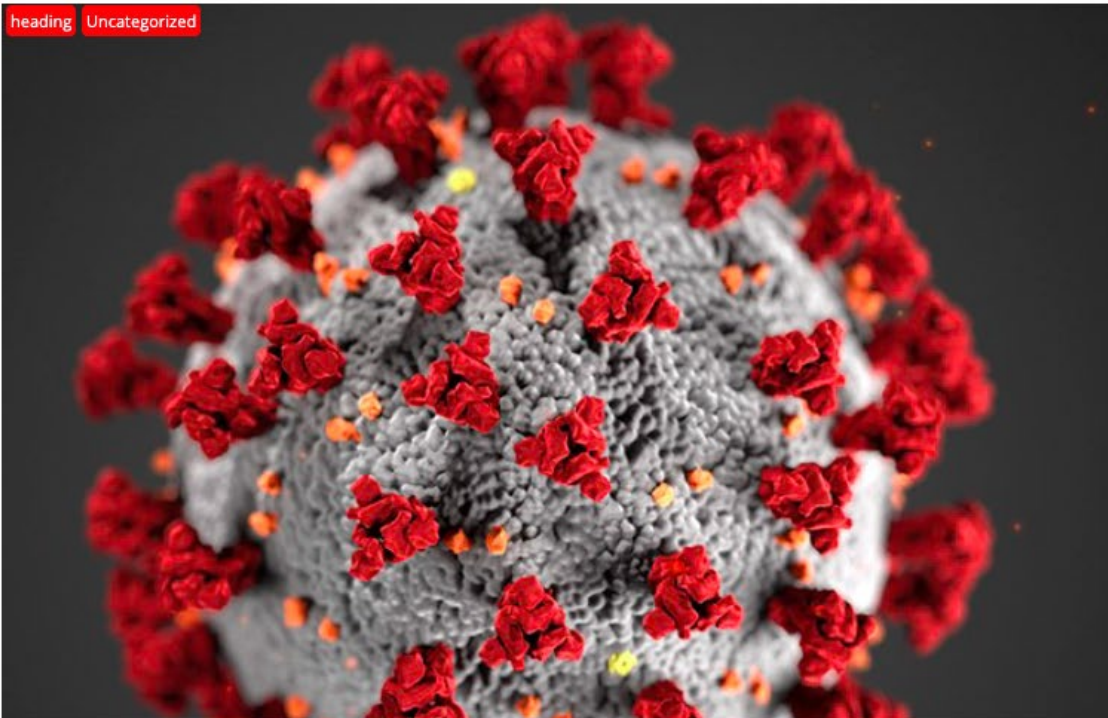
Working@NC State

EMERGENCY MANAGEMENT & MISSION CONTINUITY

ENVIRONMENTAL HEALTH & PUBLIC SAFETY

HOME EMERGENCY PREPAREDNESS RESOURCES & TOOLS ▾ PACK PLANNING ▾ AED PROGRAM WOLFALERT ABOUT US ▾

heading Uncategorized



NC STATE CURRENT WEATHER

Current Temperature: 60.4 °F
Current Humidity: 46%
Current Rainfall: 0.00 in/hr
Current Dew Point: 39.0 °F
Current Pressure: 30.261 inHg



[Visit the NC State WeatherSTEM page](#)

FOLLOW US!



Action Items:

Mandatory Employees & Critical Services

Review mandatory employees and consider the critical service they serve. *Who is their back up?*

Temporary Designation of Mandatory Employee status

With evolving staffing needs, supervisors should complete this form when temporarily changing an employee's status.

https://docs.google.com/forms/d/e/1FAIpQLSckOdLc57J5Vh_R9En2Oj0NiqMXIOx13yy-t0VLqv02d4TXjA/viewform

Action Items:

Review anything - not teaching

Review administrative duties, advising requirements, communication plans, laboratory/research operations?

Do you have a to-do list?

[Working@ NC State Resource Page](#)

- Phone a friend concept