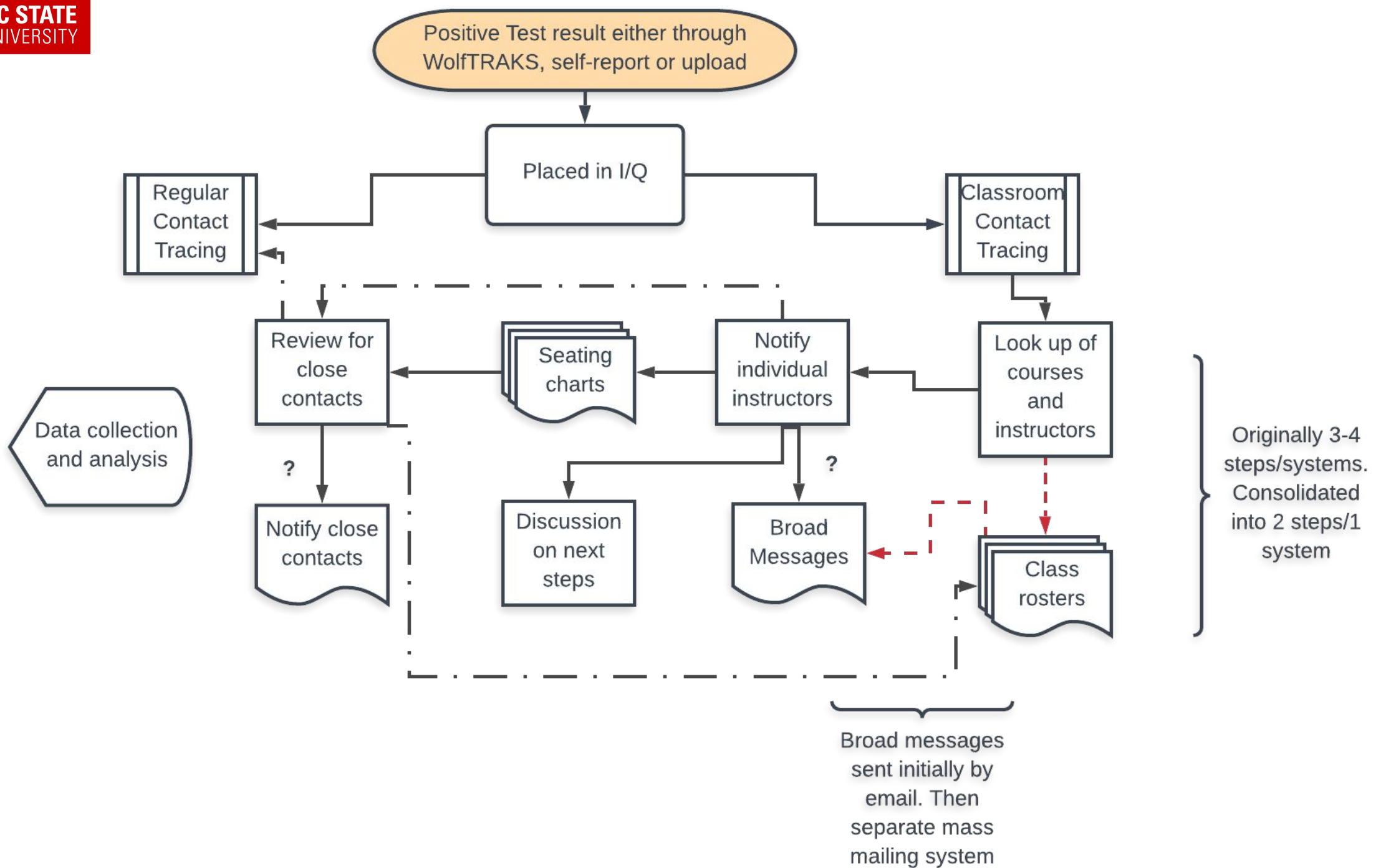


Update on Classroom Contact Tracing, COVID Vaccine and Testing

Julie Casani, MD, MPH
Director, SHS

Classroom Contact Tracing Program Goals

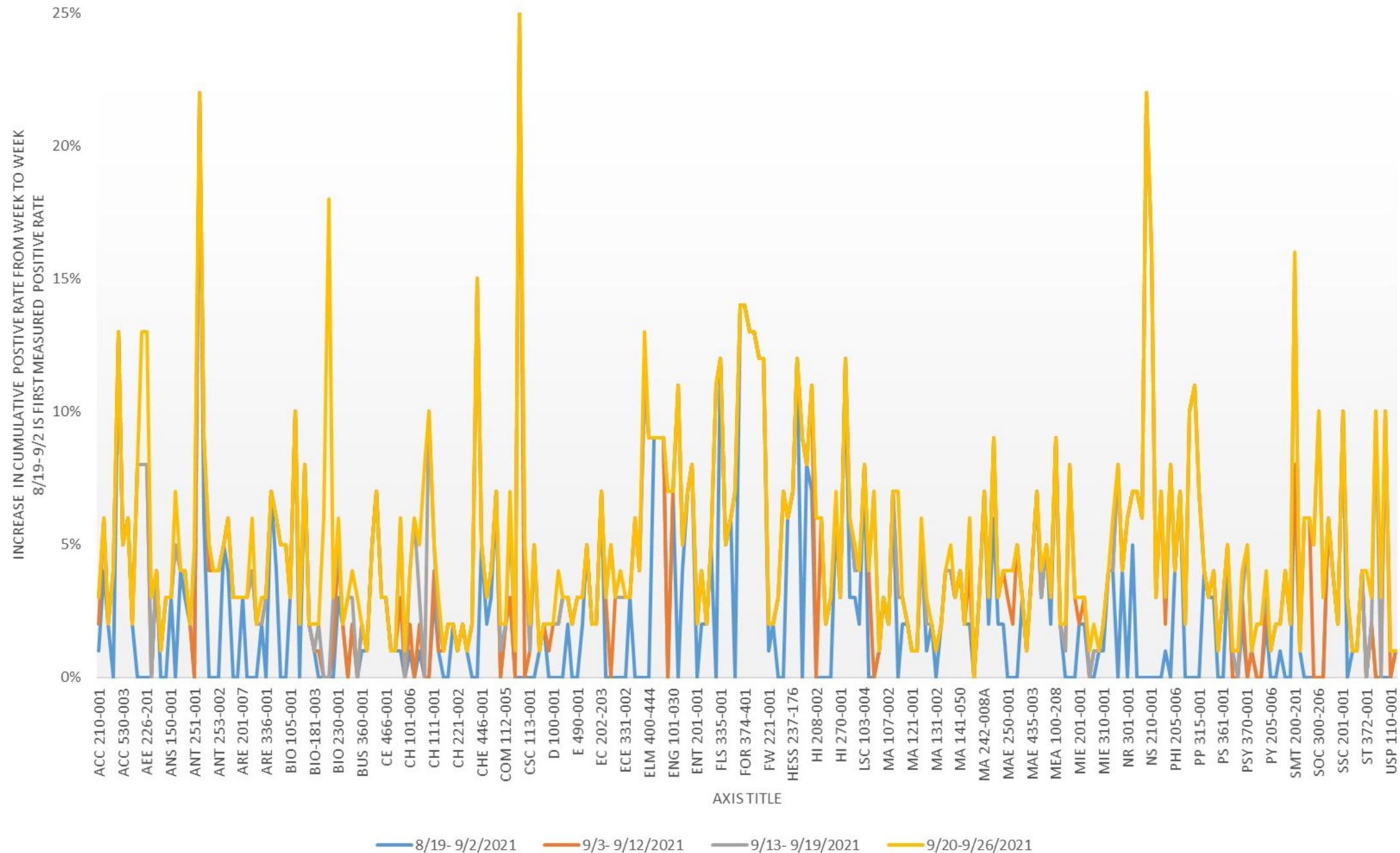
- Begin contact tracing from classroom contacts
- Notify instructors if they didn't know already
- Early identification of clusters and transmission
 - Provide flexible measures to respond to cases
- Perform classroom COVID surveillance
- (reinforce testing, protective measures in the classroom)



The numbers (August 19-September 26)

- 504 students
- 2,257 classes
- 746 broad messages sent before 9/12
 - 44,754 student and faculty recipients (28,452 unique recipients)
- ~400 focused messages to close(r) contacts

Classroom Contact Tracing



Testing

- Undergraduate/Graduate Students (regardless of housing status):
 - 26,187 are exempt,
 - 7,472 currently required, 5.46% are noncompliant
- Students in University Housing/FSL:
 - 7,639 exempt,
 - 1,368 currently required, 0.57% noncompliant
- Staff/Faculty:
 - 8,961 exempt,
 - 2,416 currently required, 48% noncompliant

Active Students	# in each category	Those with vaccine record	Percent vaccinated
Agricultural Institute	226	79	34.96%
Graduate	7190	6193	86.13%
Non Degree Status	1401	643	45.90%
Undergraduate	24390	19098	78.30%
Veterinary Medicine	397	344	86.65%
Total Sum	33604	26357	78.43%
Checked Category Sum (number used for dashboard/programming)	33378	26278	78.73%

Active Employees	# in each category	Those with vaccine record	Percent vaccinated
County Operational Supp	198	135	68.18%
CVM House Officers	107	98	91.59%
EHRA County Extension	415	331	79.76%
EHRA Faculty	2264	2106	93.02%
EHRA Non-Faculty	1995	1835	91.98%
EHRA SAAO Tier 1	20	20	100.00%
EHRA SAAO Tier 2	286	280	97.90%
Graduate Assistants	3289	3009	91.49%
Law Enforcement Officers	48	29	60.42%
Post Doc	335	296	88.36%
SHRA Employee	3766	2990	79.39%
Student Workers	4693	3981	84.83%
Temp - Exempt from FLSA	88	54	61.36%
Temp- Subject to FLSA	1855	787	42.43%
Unpaid Faculty	1766	169	9.57%
Unpaid Non-Faculty	1443	116	8.04%
Total Sum	22568	16236	71.94%
Checked Category Sum (number used for dashboard/programming)	11377	8961	78.76%

SHS flu vaccine

Flu Vaccinations



Flu shots are available at Student Health Services starting Monday, September 13th.

Flu vaccine will be offered to all primary care and gynecology patients during their visit, if clinically appropriate.

Pharmacy offers flu vaccines by appointment Monday, Wednesday through Friday 8:30 a.m. – 11:30 a.m. and 1:30 p.m. to 4:00 pm and Tuesdays 9:30 am-11:30 am and 1:30 pm – 4:00 pm.

How to schedule an appointment

You can make an appointment to get your flu vaccine online via the [HealthyPackPortal](#) or by calling 919.515.2563.

Walk-in Flu Clinics

Sponsoring Department	Location	Dates and Times
College of Education	South Atrium of Poe Hall	September 29, 2021 (Wednesday) 10 a.m. – 2 p.m.
College of Sciences	201 Bureau of Mines	October 12, 2021 10 a.m. – 2 p.m.
Fraternity and Sorority Life	House in Greek Village (TBD)	October 19, 2021 10 a.m. – 2 p.m.
College of Veterinary Medicine	Main CVM Lobby	October 26, 2021 10 a.m. – 2 p.m.
Poole College of Management	Nelson Hall N1421	November 9, 2021 10 a.m. – 2 p.m.
Talley	Room 3285	November 16, 2021 10 a.m. – 2 p.m.
College of Textiles/Centennial Campus	Convocation center room	November 23, 2021 10 a.m. – 2 p.m.
College of Humanities and Social Sciences	Caldwell Hall Lounge	November 30, 2021 10 a.m. – 2 p.m.
Talley	Room 3285	December 7, 2021 10 a.m. – 2 p.m.