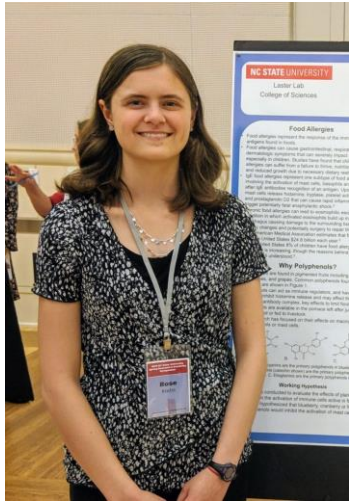


# FEED *-the-* PACK

THE FOOD PANTRY AT NC STATE

# Our Team



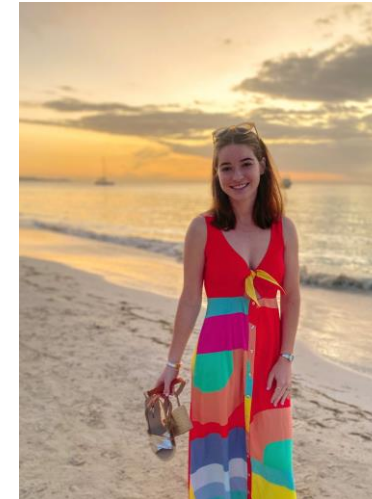
**Rose Krebs**  
FTP Program  
Coordinator



**Taylor Sligh**  
FTP VISTA



**Jon Gallagher**  
Pantry  
Manager  
Food Science



**Caroline Grace  
Barnhill**  
Volunteer  
Coordinator  
Biological Sciences



**Cameron Morris**  
Public Relations  
Manager  
Electrical  
Engineering

# Quick History

- ▶ Established November 2012
- ▶ Began in Harrelson Hall, moved to Carmichael Gym, then Broughton Hall, then to the Quad Commons Building (2221 Dunn Ave) in 2018 where we now reside
- ▶ In March 2020, Feed the Pack began offering produce in the pantry
- ▶ Over the past year, FTP has greatly expanded our partnerships, which has now enabled us to offer items such as bread, pre-made meals, pizza, produce, and other perishable items



# Our Mission

*“The mission of Feed the Pack Food Pantry is to meet the food needs of our campus community with dignity and respect.”*

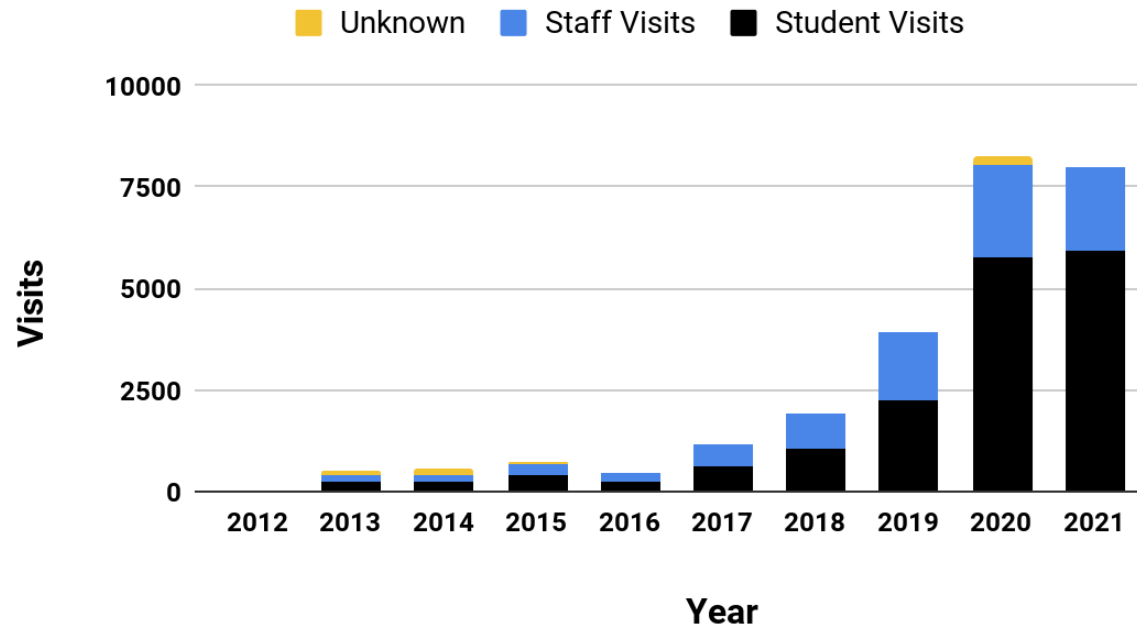
- ▶ Location: Quad Commons Building, 2221 Dunn Ave
- ▶ Shipping Address: 2610 Cates Ave, Raleigh, NC 27606
- ▶ Hours of Operation: Tuesdays and Wednesdays 12-6 pm and Fridays 12-4 pm
- ▶ FTP is open to all students, faculty, and staff connected to the university

# COVID-19 Impact: Visits

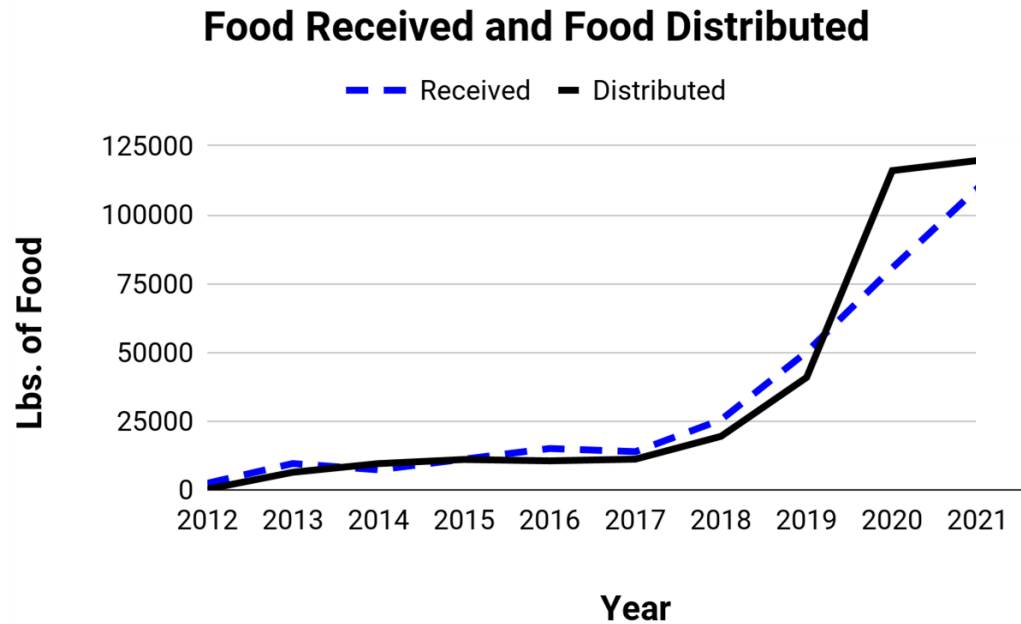
## ► Total Visits

- 3,904 visits in 2019
- 8,274 visits in 2020
- 8,002 visits in 2021

## Patron Visits over the Years



# COVID-19 Impact: Food Distribution and Purchasing



- ▶ Prior to the pandemic our pantry was sustained on donations alone
- ▶ In 2020 we began to rely more on monetary donations
- ▶ 2020-2021
  - ▶ Donated: 190,543.82 lbs
  - ▶ Distributed: 235,846.99 lbs
- ▶ Last fiscal year FTP spent nearly \$50,000 in food purchases



# Today's Stats

- ▶ Total Visits in 2022 (so far)
  - ▶ 5,081 patrons
- ▶ Food Distribution 2022 (so far)
  - ▶ Food Donated: 60,906.50 lbs.
  - ▶ Food Distributed: 73,991.32 lbs.
  - ▶ Purchased \$15,241.94 worth of food (mostly produce)
- ▶ In July alone
  - ▶ Feed the Pack had 619 visits from 231 people
  - ▶ Received 6,969.7 lbs of food from donors
  - ▶ Distributed 8,422.9 lbs of food





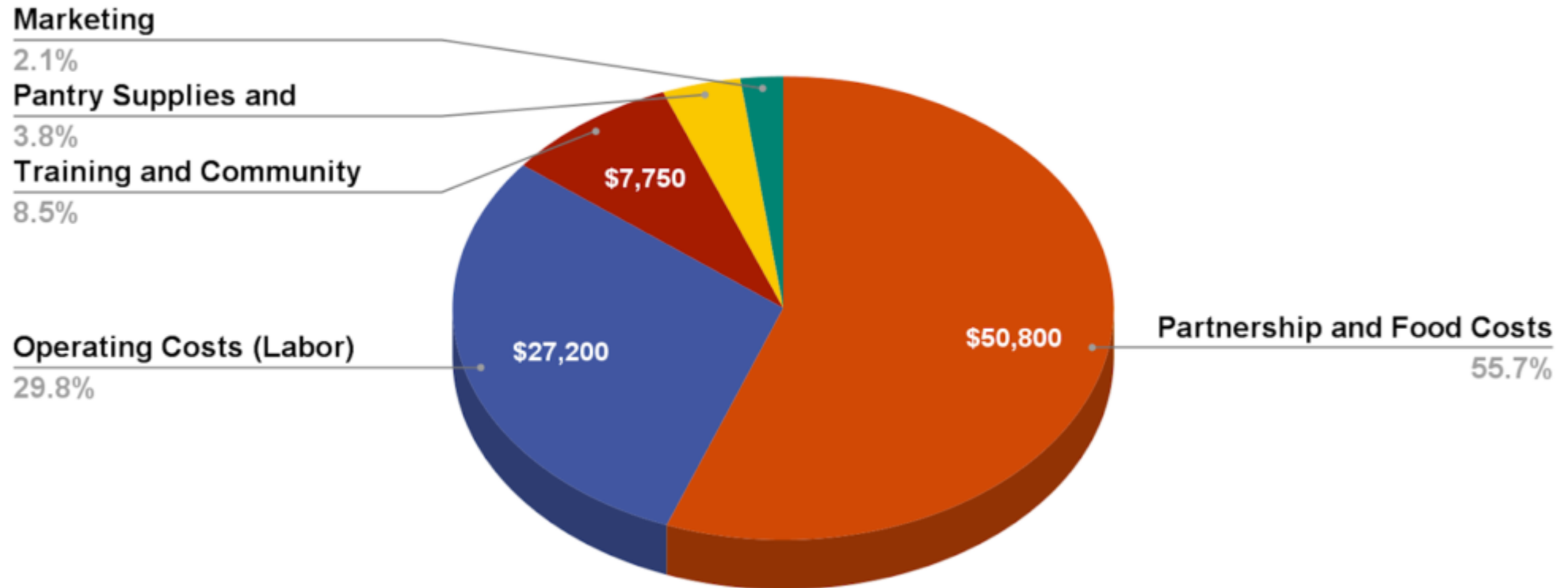
How Can You and Your Department  
Get Involved?



# 3 Main Ways

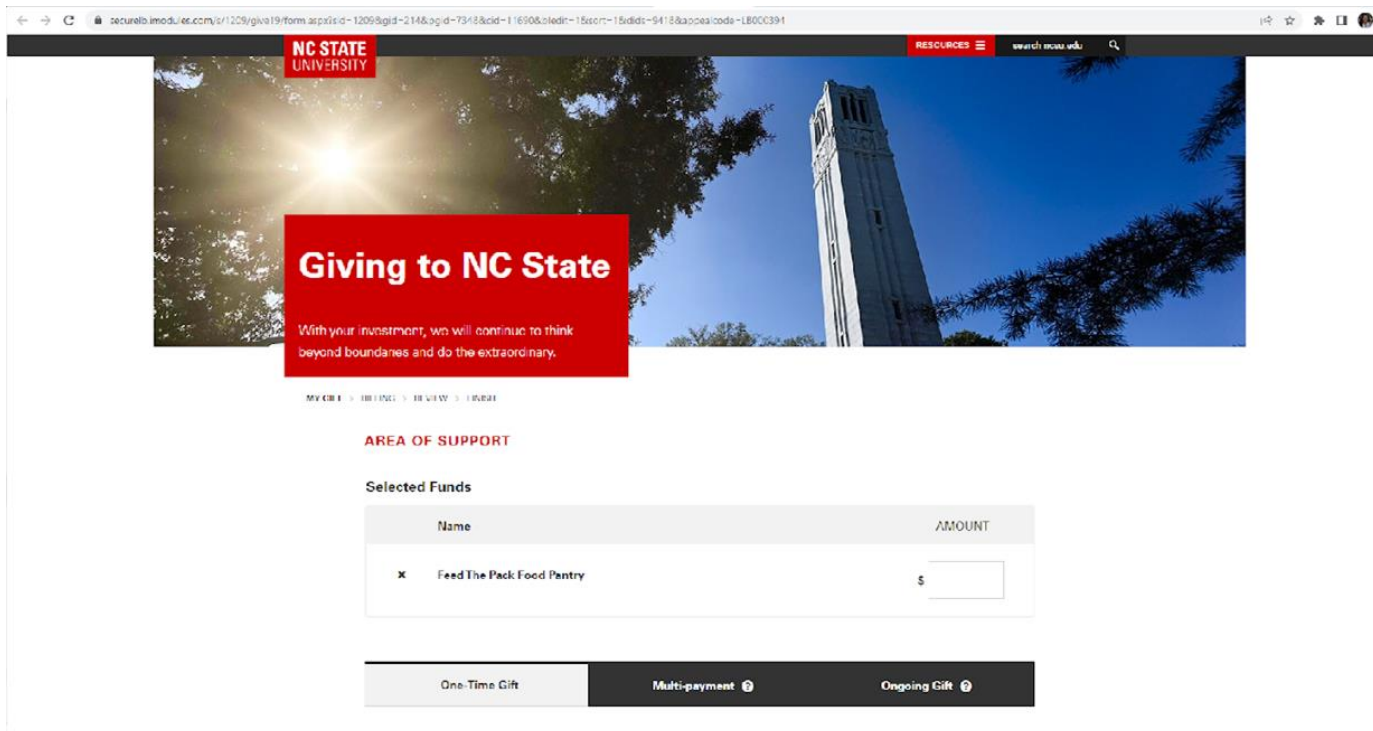
- ▶ Monetary Donations
- ▶ Food Donations
- ▶ Voluntary Contributions

## 2021-22 Budget Breakdown



# Monetary Donations

- ▶ Best way to stretch your money
- ▶ [feedthepack.dasa.ncsu.edu/support-feed-the-pack/](https://feedthepack.dasa.ncsu.edu/support-feed-the-pack/) to give Feed the Pack a monetary donation
- ▶ Automatic Payroll Deduction



The screenshot shows a web browser window displaying the NC State University donation page. The header includes the NC State University logo and a search bar. The main content area features a large image of the NC State Tower with a red overlay containing the text "Giving to NC State" and "With your investment, we will continue to think beyond boundaries and do the extraordinary." Below this, there is a section titled "AREA OF SUPPORT" with a sub-section "Selected Funds". A table lists the selected funds, showing "Feed The Pack Food Pantry" with a dollar sign and an input field for the amount. At the bottom, there are three buttons: "One-Time Gift", "Multi-payment", and "Ongoing Gift".

NC STATE UNIVERSITY

RESOURCES search.ncsu.edu

**Giving to NC State**

With your investment, we will continue to think beyond boundaries and do the extraordinary.

MY GIFT > ABOUT > REVIEW > THANKS

**AREA OF SUPPORT**

Selected Funds

Name	AMOUNT
✕ Feed The Pack Food Pantry	\$ <input type="text"/>

One-Time Gift Multi-payment Ongoing Gift

# Payroll Deduction

- ▶ Will automatically deduct a chosen set amount each month
- ▶ Automatic Sign-Up: [give.ncsu.edu/payroll](https://give.ncsu.edu/payroll)
  - ▶ Sign up for continuous monthly donations or donate for a select amount of time
- ▶ Manual Sign-Up
  - ▶ Downloadable, Printable Form for part time employees
  - ▶ Return to: Gifts and Records Management, Campus Box 7474, Raleigh, NC 27695-7474 or [giftsandrecords@ncsu.edu](mailto:giftsandrecords@ncsu.edu)



NC State Employee Payroll  
Deduction Portal

---

# Pack the Shelves

- ▶ A way for departments to support the pantry consistently
- ▶ In the past, departments have sponsored a shelf and collected physical donations of a specific type of item (ex: breakfast items) each month to donate
- ▶ Please reach out to [feedthepackoutreach@ncsu.edu](mailto:feedthepackoutreach@ncsu.edu) if you'd like to participate!



# Food Drives

- ▶ Food Drives:
  - ▶ A great way to bring our communities together
  - ▶ [feedthepack.dasa.ncsu.edu/food-drives/](https://feedthepack.dasa.ncsu.edu/food-drives/) to start your own food drive
  - ▶ Email [feedthepackoutreach@ncsu.edu](mailto:feedthepackoutreach@ncsu.edu) for more information





# Donations

## Amazon Wishlist

- ▶ Amazon list that has the pantry's most needed items
- ▶ [feedthepack.dasa.ncsu.edu/food-drives/](https://feedthepack.dasa.ncsu.edu/food-drives/)  
be directed to our Amazon Wishlist

## In-Person Donations

- ▶ Drop off during pantry hours (Tuesday and Wednesday from 12-6 pm and Friday from 12-4 pm)
- ▶ Not sure what to donate? Check our website for our current most needed items
  - ▶ We update this list weekly
- ▶ If you're shopping, grab an extra for the pantry!

The screenshot displays the website for FEED-the-PACK, identified as 'THE FOOD PANTRY AT NC STATE'. The page features a red header with the organization's name and a banner below it. To the right, a red box lists the 'HOURS OF OPERATION AND DROP-OFF DONATIONS' at 2221 Dunn Avenue, with hours for Tuesday, Wednesday, and Friday. Below this, a black box lists 'MOST NEEDED ITEMS' including Canned Chicken, Cereal, Pasta Sauce, Garbanzo Beans, Shampoo, Soap, Toothpaste, Deodorant, Mac and Cheese, and Mashed Potatoes. A red circle highlights this list. The main content area describes the pantry as a community-based initiative to combat food insecurity, followed by the text 'GO PACK!'. A 'More About Us' section explains that the pantry is open to all campus community members and provides instructions on how to use the service, including the requirement to swipe a campus ID. It also directs users to check out 'Pack Essentials' for a list of other Basic Needs Resources.

**FEED** - *the* - **PACK**  
THE FOOD PANTRY AT NC STATE

**HOURS OF OPERATION AND DROP-OFF DONATIONS**  
2221 Dunn Avenue

- Tuesday: 12-6 p.m.
- Wednesday 12-6 p.m.
- Friday: 12-6 p.m.

**MOST NEEDED ITEMS**

- » Canned Chicken
- » Cereal
- » Pasta Sauce
- » Garbanzo Beans
- » Cereal
- » Shampoo
- » Soap
- » Toothpaste
- » Deodorant
- » Mac and Cheese
- » Mashed Potatoes

Feed the Pack is a community-based initiative sustained by the greater NCSU community to combat the food insecurity experienced by members of the Wolf Pack family.

GO PACK!

**More About Us**

Feed the Pack is a food pantry open to all members of the campus community (students, staff, and faculty). In order to use the pantry, you can show up during our open hours. You will be asked to swipe your campus ID and then can shop for the items you need.

Be sure to check out [Pack Essentials](#) for a list of other Basic Needs Resources.

# Volunteer

- ▶ Shifts and Responsibilities:
  - ▶ Shifts are 1-2 hours and occur on M/T/W/F
  - ▶ Sorting/organizing large donations, managing the pantry while open, keeping the pantry clean
  - ▶ Prior to volunteering in the pantry all volunteers complete a 30 minute online training to go over the basics and necessary information
- ▶ The Need:
  - ▶ We especially need staff and faculty volunteers over breaks (winter/summer)
- ▶ Group volunteer opportunities (training not required)
  - ▶ Groups of 3-6 people, Monday 10 am-12 pm
  - ▶ Sorting, organizing, and shelving large donations
  - ▶ Contact the email address below at least 2 weeks prior to the Monday you would like to volunteer
- ▶ Email [feedthepackvolunteer@ncsu.edu](mailto:feedthepackvolunteer@ncsu.edu) if you would like to volunteer as an individual or as a group



# Include Pack Essentials in your Syllabi

- ▶ Add our suggested paragraph into your syllabus so that students know that our Pack Essentials resources are available to them

## For Food & Housing Insecurity:

Any student who faces challenges securing food and/or housing or has other financial challenges and believes this may affect their performance in this course is encouraged to notify the professor if you are comfortable in doing so. Alternatively, you can learn more about the Pack Essentials program and available resources by visiting <https://dasa.ncsu.edu/pack-essentials/>

# Stay Connected

- ▶ [Feedthepack.dasa.ncsu.edu](https://Feedthepack.dasa.ncsu.edu)
- ▶ [feedthepackpantry@ncsu.edu](mailto:feedthepackpantry@ncsu.edu)
- ▶ Sign up for our newsletter!
- ▶ Connect with us on Instagram and Facebook



Thank You!!

